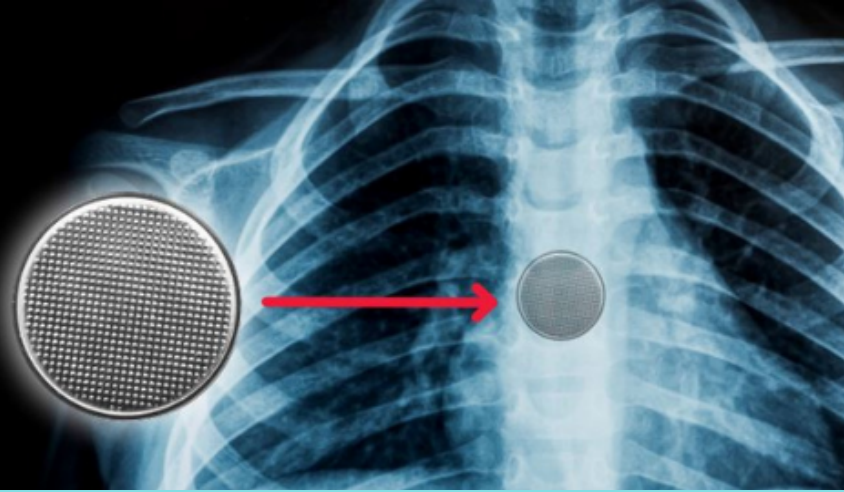


BUTTON BATTERIES CAN KILL

Keep all batteries out of children's reach



 Warning: If swallowed or inserted, a button battery can cause serious injury or death in as little as 2 hours.

Common items containing Button Batteries



How to be Button Battery safe



Look for items in the home containing button batteries and dispose of any unwanted items safely.

Ensure items have secured button battery compartments. Remember to tighten the screw after replacing the battery.

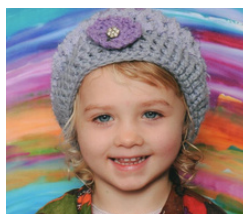
Store button batteries in a sealed container, up high and out of reach of children.

Place tape around both sides of the button battery and dispose or recycle the battery safely and immediately.

How to call for help

If you suspect a button battery has been swallowed or inserted, immediately call the **Poison Information Center 13 11 26** for 24/7 expert advice.

If your child is having difficulty breathing, immediately **CALL 000** for an ambulance. **DO NOT** let the child eat or drink. **DO NOT** induce vomiting.



Summer Steers, 4 yrs old



Isabella Rees, 1 yr old



Brittney Conway, 3 yrs old

YOU CAN SAVE A LIFE.

VISIT BELLASFOOTPRINTS.COM.AU

Bella's  *Footprints*

Button Battery Awareness

